

## Additional Dress Code Guidelines

- Jewelry may be worn so long as it does not present a safety hazard. No large or dangling jewelry, including earrings and medallions.
- Boys wearing earrings must cover the earring(s) with a Band-Aid. Band-Aids are not provided by campus teacher or campus nurse.
- NOT PERMITTED: Tattoos (including washable/removable tattoos), sweatbands.

Note: Teachers/staff are not responsible for loss or theft of jewelry.

## Hairstyles/Makeup/Nails

- Hair must be neat and clean. No designs or logos shaved into hair. No Mohawks. No unconventional hair colors or hairstyles.
- NOT PERMITTED: makeup or artificial nails (for safety reasons).

## Consequences

- If a scholar is not in dress code, Allen staff will contact the scholar's parents to bring a change of clothes. In an effort to minimize any time out of the classroom, the scholar will be offered clothing provided by the school (if available) until change of approved clothing is brought to school.
- Repeated failure to adhere to the dress code will result in administrative action.

In order to enhance and encourage school pride, pride in personal appearance, self-respect, respect for others and to ensure scholar success, all scholars attending T.G. Allen Elementary School are required to follow the standardized dress code.

NUT (No Uniform Today) Pass - The NUT Pass is offered to scholars as an incentive/reward. Scholars must still adhere to CCISD's dress code policy listed in the Student and Parent Handbook.

**NOTE: Final determination of acceptable dress, grooming, and accessories rests with the Campus Principal or designee.**

**PROUD ALLEN SCHOLARS DRESS FOR SUCCESS!**



**1414 18th Street  
Corpus Christi, Texas  
78404**

**Phone: (361) 878-2140**

Dr. Elodia Gutierrez, Principal  
Ms. Jennifer Englert, Asst. Principal



**T.G. Allen  
Elementary  
School**

**2017-2018**

**Standardized  
Dress Code**



# T.G. Allen Standardized Dress Code Guidelines

The goals of the T.G. Allen Elementary Standardized Dress Code are to increase school pride and a personal sense of belonging to a school that sets high expectations academically as well as behaviorally.

## Shirts

- Solid colors without emblems, stripes, or markings. *Prefer;* collared shirts, t-shirts with sleeves, or T.G. Allen school shirts. Insignias should be no larger than one inch.
- All shirts should be long enough to cover the full back when seated yet be no longer than the fingertips; otherwise, shirts must be tucked in.
- NOT PERMITTED: sleeveless shirts, muscle shirts, off the shoulder shirts, shirts with spaghetti straps, see-through shirts, or shirts which expose the midriff area.

## Pants

- Solid colored jeans, pants or slacks must be neatly hemmed and fitted.
- Belts are necessary to prevent sagging.
- NOT PERMITTED: nylon, mesh, spandex, baggy pants, sagging pants, legging type pants, sweat pants, and pants with rips, cuts, holes, or tears.

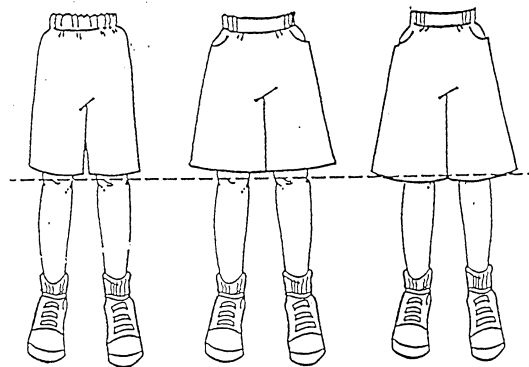
## Dresses, Skirts, Skorts, and Jumpers

- Solid colored dresses, skirts, skorts and jumpers.
- Appropriate length --- same as shorts (see below).
- Shorts under skirts are strongly recommended.

## Shorts

- Solid colors only.
- Short length must follow district guidelines for all students (see below).
- NOT PERMITTED: biker shorts, basketball shorts, leggings, or tights worn alone.

**Appropriate length of shorts**  
**No shorter than 3 inches above knee.**



**NOTE: All clothes should fit appropriately. No tight-fitting or sagging attire will be permitted.**

## Outerwear

- **No lewd, offensive, vulgar, or obscene pictures/gestures**
- Weather permitting pullover/zipper sweatshirts and sweaters.
- Sweatshirts should not be longer than the finger tips.
- Hoods may not be worn indoors.

## Shoes

- Athletic shoes should be worn to ensure student safety.
- PE: must wear athletic shoes for all physical activity classes/events.
- NOT PERMITTED: open toe shoes/sandals, open heel shoes, slaps, platform shoes, wedge tennis shoes, shoes with heels exceeding one inch, tennis shoes with wheels.

## Caps and Hats

- NOT PERMITTED: caps, hats, bandanas or scarves. Exception: caps or hats may be worn to outside school sponsored events.

## Eyewear

- Prescriptive eyewear only.
- NOT PERMITTED: Sunglasses.

Approved by CAT: May 24, 2017